

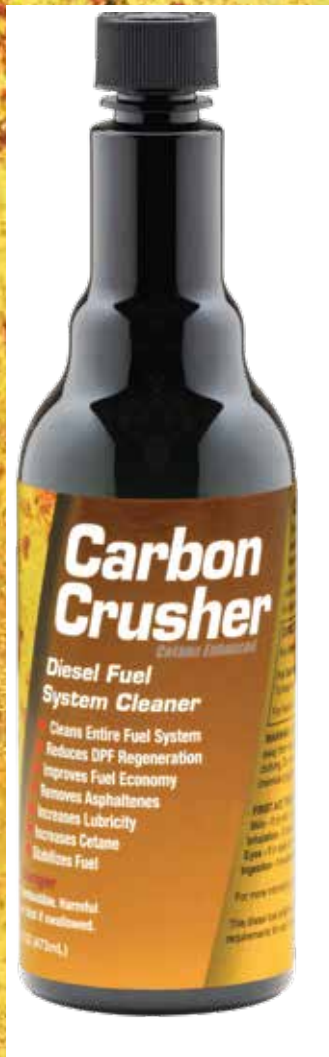
**Reduces
DPF Regen**

Carbon Crusher

Cetane Enhanced

Diesel Fuel System Cleaner

The best all-around diesel fuel system cleaner, CARBON CRUSHER reduces fuel costs by cleaning the entire fuel system from top to bottom. CARBON CRUSHER removes fuel system deposits that reduce fuel economy and asphaltenes that plug fuel filters. CARBON CRUSHER increases power, reduces DPF regeneration and stabilizes fuel for prolonged use. CARBON CRUSHER is formulated especially for high pressure common rail fuel systems.



- Cleans Entire Fuel System
- Reduces DPF Regeneration
- Improves Fuel Economy
- Removes Asphaltenes
- Increases Lubricity
- Increases Cetane
- Stabilizes Fuel

PART#	SIZE	UNITS/CS	TREATS	DIRECTIONS
D70-08	8 OZ	12	100 GL	Use 1 OZ to every 12 GL of fuel
D70-16	16 OZ	24	200 GL	Use 1 OZ to every 12 GL of fuel
D70-01	1 GL	6	1,600 GL	Use 1 GL to every 1,600 GL of fuel
D70-05	5 GL	1	8,000 GL	Use 1 GL to every 1,600 GL of fuel

To keep fuel system clean, use once every 10,000 miles.

An overtreatment of additive is not harmful.

For best results, add additive before filling tank.

ULSD Formula

E-ZOIL performance additives are formulated for today's Ultra Low Sulfur Diesel. They meet all emission standards and provide added protection for your valuable diesel powered equipment.

For maximum fuel system cleaning, reach for CARBON CRUSHER!



E-ZOIL
Performance. Pour it on.



**SUPERIOR
DIESEL COMPANIES**
WWW.SUPERIORDIESELCOMPANIES.COM

234 Fillmore Avenue, Tonawanda, New York 14150
855-MY-EZOil EZOil.com Made in the USA

3745 Central Street, Detroit, Michigan 48210
313-842-4616 SuperiorDieselCompanies.com

Carbon Crusher

Cetane Enhanced

Diesel Fuel System Cleaner

Problem: Dirty, Poor Running Fuel System

Solution: Carbon Crusher Diesel Fuel System Cleaner

DETERGENT

Carbon Crusher contains state-of-the-art detergents to help remove stubborn carbon deposits throughout the entire fuel system, including both traditional coke deposits and internal diesel injector deposits (IDID). IDIDs are found in high pressure common rail fuel systems. **Carbon Crusher** keeps the fuel system clean, which improves combustion *and* reduces diesel particulate filter (DPF) regeneration cycles.



GOOD
SPRAY PATTERN

FAULTY
SPRAY PATTERN



CLEAN FILTER

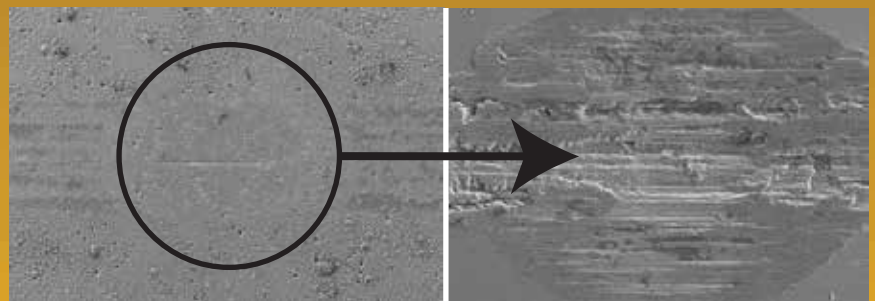
PLUGGED FILTER

THERMAL STABILITY

All modern diesel engines thermally stress diesel fuel. Thermal instability of diesel fuel can lead to the formation of asphaltenes, which are tar-like, organic particles that are naturally present in fuel. Asphaltenes can plug fuel filters. **Carbon Crusher** dissolves asphaltenes and restores thermal stability.

LUBRICITY

Fuel system lubricity is critical to all fuel system components. A lack of lubricity can result in fuel system scars and wear. Carbon Crusher contains a heavy-duty lubricant that increases lubricity and reduces fuel system component failure.



METAL SCAR

METAL SCAR
MAGNIFIED