

Driven by
RELIABILITY



COMMON RAIL INJECTORS

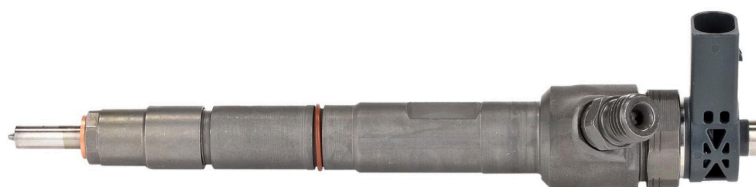
Advantage of Bosch Reman Injectors

- *Produced with a mixture of new OE components and reconditioned OE components*
- *End of line testing using the exact OE test specifications*
- *Guaranteed to offer OE performance*
- *Guaranteed to meet all emission specifications*
- *Injectors built with parts with known or proven reliability and durability*
- *Built with Bosch-designed tooling, fixtures and test equipment*

Bosch Approved Reman Center State of the Art Clean Room

Warranty-

Bosch Reman & Authorized Center
2 Year Unlimited Warranty
Internet & 3rd Party - Unknown



BOSCH
Invented for life



SUPERIOR
DIESEL COMPANIES
WWW.SUPERIORDIESELCOMPANIES.COM

**LOCATIONS
SERVING YOU**

Detroit Superior Turbo & Injection. 3745 Central Street | Detroit, MI 48210 | (313) 203-3700
Grand Rapids Diesel Injection Service. 430 54th St SW | Grand Rapids, MI 49548 | (616) 531-1030
Edwardsburg Stateline Diesel Service. 25162 US Highway 12E | Edwardsburg, MI 49112 | (269) 663-8571
Blissfield Superior Turbo & Injection. 211 N Jipson St | Blissfield, MI 49228 | (517) 486-0000

Why Injectors Fail

The common rail system is a major advancement in diesel technology.

This system provides diesel engines with:

- Quieter performance • Improved fuel economy
- Higher torque • Lower emissions

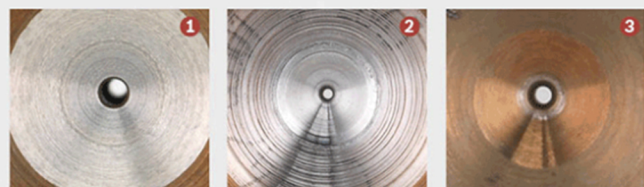
The key causes of injector failure are:

- Poor Fuel Filtration • Fuel Contamination
- Incorrect Installation
- Non-OEM approved remanufactured products

What Can I Do?

Make sure your car is being serviced by a reputable shop and ask about the parts they use on your diesel engine to ensure they are from an OEM approved supplier.

Tear-down findings from Bosch testing process



- 1 Sealing surface for a new Bosch valve body.
- 2 Sealing surface of a competitor valve body
- 3 Sealing surface of a competitor valve body

Tear-down findings from Bosch testing process



- 1 New Bosch valve body and plunger
- 2 Used Competitor valve body and plunger
- 3 New Competitor valve body and used plunger



Part Number	Application	Year	Engine	OE Cross
0986435502	Chevy, GMC	2001-2004.5	6.6L	0445120008 97729095 97720661 97720604 97208074
0986435503	Dodge Ram	2003	5.9L	0445120255 0445120018 0445120113 0445120210 5263318 3949619 3949619NX 4983416 4940589 5263318NX 5263318RX 68004082AA 5086594AA R5086894AA 4940589NX 4940589RX
	Dodge Mid-Range	2003-2007		
0986435504	Chevy, GMC	2004.5-2005	6.6L	0445120027 97303657
0986435505	Dodge Ram	2005-2007	5.9L	0445120238 0445120032 0445120103 0445120114 0445120208 5263316 3968158 4937700 4940051 5263316NX 3972887NX 5135790AB 4937700NX 5135790AC R5135790AC 4940051NX 5135790AD R5135790AD 524588RX 5254688NX
0986435518	Dodge Ram	2007-2012	6.7L	0445120193 0445120050 0445120185 5253220 4940095 4981076 5253220NX 68069384AA 4940095NX 68027067AA R8027067AA R8002011AB 4981076NX 68027067AB
0986435519	Dodge Cab Chassis	2007-2010	6.7L	0445120204 0445120071 0445120184 5253221 4940096 4981077 5253221NX 68002012AD R8002012AB 68002012AB 4940096NX 4981077NX 68002012AC
	Dodge Mid-Range	2007-2009		
0986435520	Chevy, GMC	2007-2010	6.6L	0445120082 98002368
0986435521	Chevy, GMC	2006	6.6L	0445120042 97361355

**LOCATIONS
SERVING YOU**

Detroit Superior Turbo & Injection. 3745 Central Street | Detroit, MI 48210 | (313) 203-3700

Grand Rapids Diesel Injection Service. 430 54th St SW | Grand Rapids, MI 49548 | (616) 531-1030

Edwardsburg Stateline Diesel Service. 25162 US Highway 12E | Edwardsburg, MI 49112 | (269) 663-8571

Blissfield Superior Turbo & Injection. 211 N Jipson St | Blissfield, MI 49228 | (517) 486-0000